



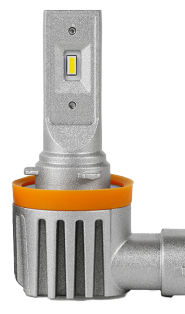
HD12PRO-H4

Two Function | High/Low Beam



HD06PRO-H7

Single Function



HD06PRO-H11

Single Function



HD12PRO-H13

Two Function | High/Low Beam



HD06PRO-9005

Single Function



HD06PRO-9006

Single Function



HD12PRO-9007

Two Function | High/Low Beam

Product Specifications

LED:	4220 SMD Chip Set
COLOR TEMP:	6500K
OPERATING TEMP:	-40°F — +127°F
VOLT RANGE:	9-32 VDC
IP:	65
LUMEN:	6,000 per Pair
OPERATING LIFE:	30,000 Hours

HDL's new "Pro Series" replacement bulbs were developed to closely replicate the size, fit and function of a vehicle's factory halogen bulbs. This makes retrofitting and upgrading your vehicle to LED bulbs simple.

These bulbs have been engineered with advanced integrated electronic circuits for focused stable light output. Plus, our "Pro Series" design features a copper heat transfer core and excellent aluminum alloy heat sink body for supreme heat dissipation. Brighter, lower power consumption and longer lasting than halogen bulbs. All great reasons to upgrade now!

Additional Images & Dimensions



HD12PRO-H4



HD06PRO-H7



HD06PRO-H11



HD12PRO-H13



HD06PRO-9005



HD06PRO-9006



HD12PRO-9007