



HD32104-5F
4 LED | Flood



HD32104-5S
4 LED | Spot

ATCS® ADVANCED TEMPERATURE CONTROL SYSTEM

ATCS® is a smart thermal technology designed to allow LED's to operate at a higher lumen output with maximum driver current while not compromising the longevity of the light. The system takes advantage of its superior cooling design to power and monitor all LED's for maximum output by adjusting the output according to the environment.

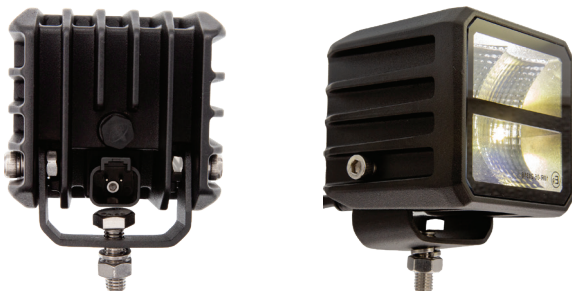
Product Specifications

LED:	10W SMD 40W
COLOR:	White
DIMENSION:	3.14" x 2.95" x 2.95"
VOLT RANGE:	10 - 32 VDC
AMP DRAW:	1.347A @ 12V, 0.63A @ 24V
LUMEN:	2324 -2800 Eff. 4000 Raw
IP VALUE:	69, 69K

Product Features

- » Advanced Temperature Control System
- » Powder Coated Die Cast Aluminum Body
- » Impact Resistant Polycarbonagte Lens
- » Sealed Coated Electronics
- » Frameless, Refractive Lens with ATCS
- » Stainless Steel Mounting Bracket
- » Shielded Cable with Deutsch Connectors
- » Metal Breather for Moisture Dissipation
- » Working Temp: -40° to +50°C
- » Color Temp: 5700K
- » ECE R10 | R149

Additional Images



Drawings

